

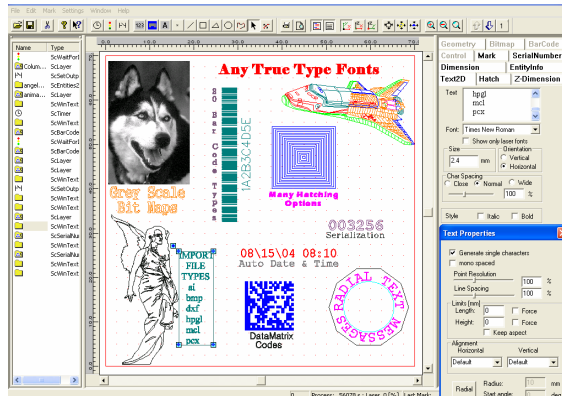


Nutfield Technology

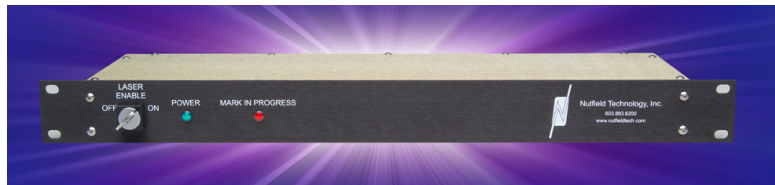
Photonics in Motion®

LASER/SCANNER SOFTWARE AND CONTROL

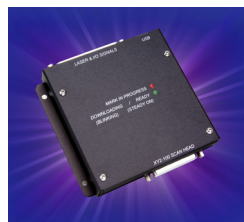
- ◆ USB 1.1 or 2.0 Interface or
- ◆ Stand-Alone (No PC)
- ◆ 10usec. Update Rate
- ◆ For Win. 2000/XP/Vista
- ◆ Intuitive, Easy to Learn Graphical Interface
- ◆ Serialization & Text Merge
- ◆ Radial & Vertical Text
- ◆ Import Many Vector and Graphic File Types
- ◆ Paste Art From Clipboards
- ◆ Scale, Rotate, and Mirror
- ◆ External Control Capable
- ◆ Displays Any Language
- ◆ Mark Any Installed True Type Fonts and Barcodes
- ◆ Additional I/O Control for Material Handling
- ◆ Stepper/Servo Motion Control X/Y, Z, & Rotary
- ◆ Controls Any Laser Type
- ◆ Built In Lens Correction
- ◆ Remote Access & Control



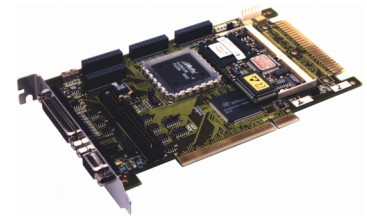
WaveRunner
Laser/Scanner Software



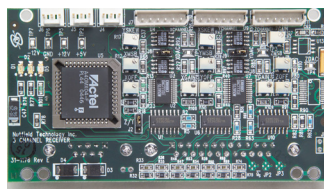
PipeLine USB Based Laser/Scanner Control
19" Rack Mount 16-Bit, XY2-100 Interface
Breakout Connectors for Laser, I/O & Encoder



SurfBoard-USB
Laser/Scanner Control
16-Bit, XY2-100



PCI Laser/Scanner Control
16-Bit, XY2-100 Interface



2 or 3 Channel
XY2-100, 16-Bit
D/A Receiver Board



QD-3000 Class-1
Dual Servo Drive



QD-4000 Class-1
Mini Servo Drive

NUTFIELD TECHNOLOGY, INC.
sales.info@nutfieldtech.com
www.nutfieldtech.com
603-893-6200



WAVE RUNNER/SURFBOARD

Laser/Scanner Control Specifications

Advanced Feature Set

The GUI editor allows you to define marking jobs using a variety of editing tools:

- ◆ Scale, move, rotate, group, or mirror any object
- ◆ Use align tools to place objects in the mark field
- ◆ Add any TrueType font, with serialization, radial text, vertical text
- ◆ Add Barcode 2 of 5, 39, 128, 93, DataMatrix, CodaBar, UPC, EAN and others
- ◆ Import graphics saved as AI, SVG, CMX BMP, DXF, HPGL, JOB, MCL, PCX, PLT, and WMF
- ◆ Paste line art directly into WaveRunner from the Windows Clipboard
- ◆ Fill or Hatch elements on-screen to create a "solid fill". Control fill density, angle and Algorithm.
- ◆ Control virtually any laser; YAG, CO2, Fiber
- ◆ Interface to any XY2-100 or Analog Scan Head

I/O Specifications

System Status I/O

Start Process Input

Mark in Progress, Error Flag, Busy/Ready outputs

Discrete I/O

6 User Programmable Inputs

6 User Programmable Outputs

RS-232 Port

Supports bi-directional communication

Network

Built in Server provides services for external applications to control and monitor Software

Update Rate

10usec. for USB Card

30usec. for PCI Card

Motion Control

RS-232/485 control of up to 3 channels of motion control axes. You can control an X/Y stage, Z motion, or rotary motion through easy graphical user screens.

System Requirements

Laser

Controls virtually any laser type

Digital, Analog or PWM external power control

Digital or Analog external Q-Switch control (YAG)

Scan Head Interface

Any standard XY2-100 or Analog interface scan head

Hardware

Any Windows based computer with USB 1.1 or 2.0

Or Any IBM PC compatible computer with PCI Bus

Windows 2000/XP/Vista

Processor: 1 GHz minimum

Memory: 256 MB minimum

Free Disk Space: 300 MB

Screen Display

65,536 colors (min.)

1024 x 768 resolution (min.)

Network

TCP/IP stack installed and configured

Available in Several Configurations

- ◆ Stand-Alone (No PC Required)
- ◆ Private labeled self contained use
- ◆ By remote control using an Active-X Interface
- ◆ Windows COM Server

Link to the software from an external program running on the same computer or through a network interface. Commands for loading, editing, marking and clearing of jobs are exposed through a standard COM interface.

The Easiest, Most Advanced, Laser Scanning Control Software In The Market Today.

View Screen Shots and Download a Free Demonstration On-Line.

NUTFIELD TECHNOLOGY, INC.
49 Range Road
Windham, NH USA 03087

Phone: 603.893.6200
Fax: 603.893.6214

WWW.NUTFIELDTECH.COM

Specifications subject to change without notice. 2007