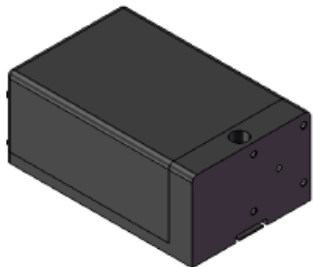


### Fiber coupling options for all 04-01 laser models; FIC-02 + multimode, single mode and polarisation maintaining fiber coupling

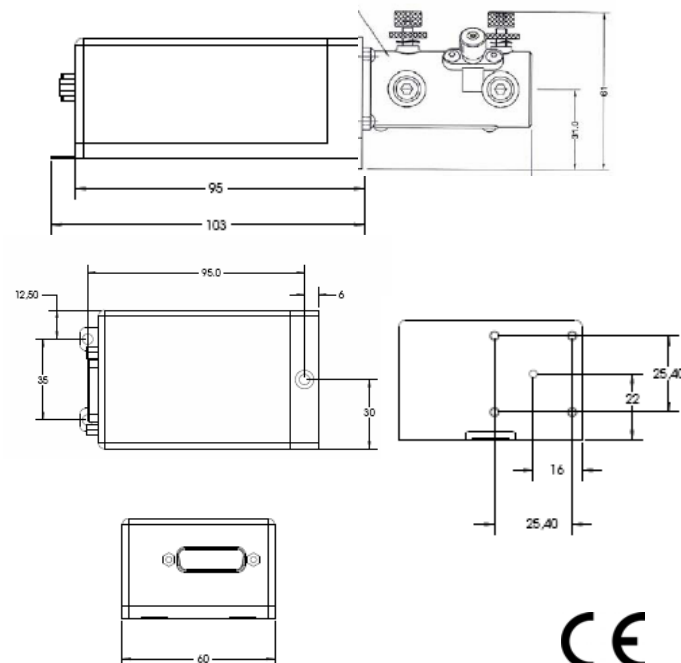
Fiber coupling options are available for all visible Cobolt lasers. The option FIC-02 described here consists of a laser housing especially designed to mount the fiber coupler onto and is suitable for 04-01 laser models. Fiber coupling options for either multimode fiber (MM) or singlemode polarization maintaining (SM/PM) fiber are also available. For MM fiber coupling we offer a receptacle style coupler (with angled FC/PC connector) and MM fiber from Oz Optics. For singlemode PM fiber coupling we offer pre-aligned solutions from Point Source. The output is either collimated to 0.7mm beam diameter or with an APC or FCP8 connector. The housing is also available with no fiber coupler for customers who already have a coupling solution. For other options please contact the factory.



### Specifications

	SM/PM	MM
Fiber core size	3.5 $\mu\text{m}$	100 $\mu\text{m}$
Coupling efficiency	>60 %	> 80 %
Output beam diameter	0.7 $\pm$ 0.05 mm	
Dimensions Point Source coupler [mm]	167 x 60 x 40	
Mounting screws for coupler & laser base	M3	
FIC-02 suitable for use with laser models 473nm-594nm	Cobolt Blues™ Cobolt Samba™ Cobolt Jive™ Cobolt Fandango™ Cobolt Mambo™	

### Dimensions



Issued 2008-10-10. Subject to change without notice.