

# PRONTO-250

0.5 W - 250 W Power Probes with Touch Screen Controls

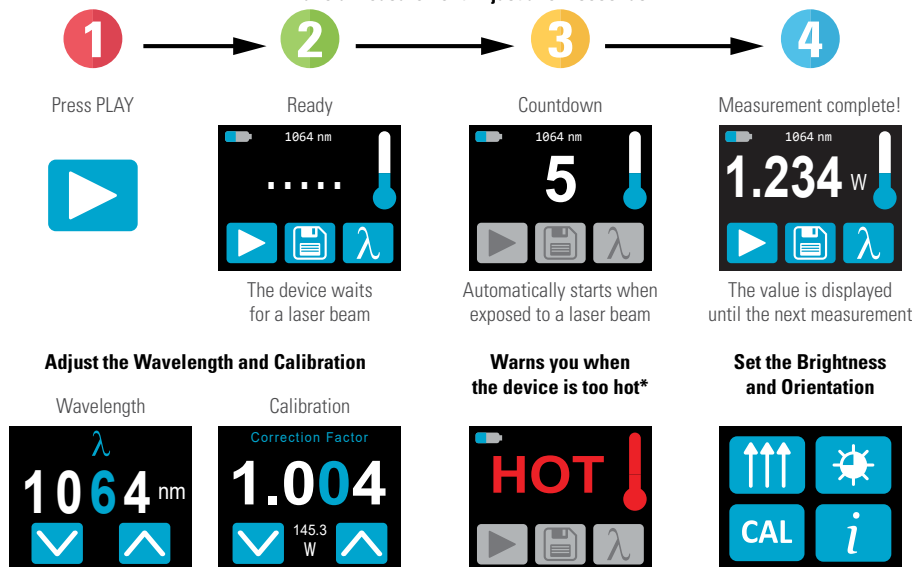


## KEY FEATURES

- 1. POCKET-SIZE**  
This mid to high power laser probe is so compact it fits in your pocket!
- 2. EASY-TO-USE**  
The touch screen color LCD allows for a friendly user interface. You can make a measurement with just the touch of a button!
- 3. DATA LOGGING**  
Save your data to the internal memory and then transfer it to your PC over the USB connection.
- 4. FROM LOW TO HIGH POWERS**  
Thanks to a low noise level and high damage threshold, the Pronto can measure powers from 0.5 W to 250 W.
- 5. YAG AND CO<sub>2</sub> CALIBRATIONS**  
The Pronto-250 comes fully calibrated: every wavelength between 248 nm and 2.5  $\mu$ m (YAG), and a real calibration at 10.6  $\mu$ m (CO<sub>2</sub>).  
The Pronto-250-PLUS has an additional calibration for Single-Shot Energy measurements.
- 6. HANDS-FREE OPERATION**  
Place it on a flat surface or use one of the 2 threaded holes for safe use with optical stands.
- 7. NEW SERIAL COMMANDS**  
Serial commands are available to let you take full control of your Pronto from your PC.

## USER INTERFACE (SSP MODE)

Make a measurement in just a few seconds



## 2 MODELS FOR ALL YOUR MEASUREMENT NEEDS

The regular **Pronto-250** is very easy to use and will give you accurate one shot measurements, thanks to its unique Measurement Mode:

- Single Shot Power (SSP): Up to 250 W

The new **Pronto-250-PLUS** model comes with 3 Measurement Modes and can be used in a variety of applications:

- Single Shot Power (SSP): Up to 250 W
- Continuous Power (CWP): Up to 8 W
- Single Shot Energy (SSE): Up to 25 J



\* Device may get hot, it is not recommended for handheld use when making a measurement

# PRONTO-250



## SPECIFICATIONS

PRONTO-250		PRONTO-250-PLUS		
		SSP Mode Measures in 5 sec	CWP Mode Measures Power continuously	SSE Mode Measures in less than 0.5 sec
MAX AVERAGE POWER/ENERGY	250 W	250 W	8 W	25 J (up to 150 J for pulses >1 ms)
EFFECTIVE APERTURE	19 mm Ø	19 mm Ø		
INTERFACE	Touch Screen Color LCD Display	Touch Screen Color LCD Display		
MEASUREMENT CAPABILITY				
Spectral Range	0.19 - 20 µm	0.19 - 20 µm		
Calibrated Spectral Range	0.248 – 2.5 µm and 10.6 µm	0.248 – 2.5 µm and 10.6 µm		
Noise Equivalent Power/Energy	10 mW	10 mW	10 mW	60 mJ
Minimum Measurable Power/Energy	0.5 W	0.5 W	0.2 W	N/A
Exposure Time	5 sec	5 sec	1.5 sec response time	0.26 sec
Measurement Accuracy	± 3 %	± 3 %	± 2.5 %	± 5 %
Min Repetition Period (Max Pulse Width)	N/A	N/A	N/A	4 sec (88 ms)
Display Resolution	1 mW	1 mW	1 mW	10 mJ
DAMAGE THRESHOLDS				
Maximum Average Power Density <sup>a</sup>	45 kW/cm <sup>2</sup> (at 1064 nm, 10 W, CW) / 14 kW/cm <sup>2</sup> (at 10.6 µm, 10 W, CW)			
Maximum Exposure Time <sup>b</sup>	6 sec	6 sec	N/A	N/A
Maximum Device Temperature <sup>b</sup>	65°C	65°C	40°C	40°C
USER INTERFACE				
Measurement Controls	Wavelength Selection and User Calibration			
Measurement Modes	Single Shot Power (SSP)	Single Shot Power (SSP), Continuous Power (CWP) and Single Shot Energy (SSE)		
Data Acquisition and Transfer	Simple On/Off Controls, saves to on-board memory and transfers data to the PC using the USB connection			
Screen Personalization	Orientation and Brightness controls			
Battery Indicator	On-screen indicator with 4 levels			
GENERAL SPECIFICATIONS				
Display Type	Touch Screen Color LCD	Touch Screen Color LCD		
Display Size	28.0 x 35.0 mm (128 x 160 pixels)	28.0 x 35.0 mm (128 x 160 pixels)		
Backlight	Adjustable	Adjustable		
Internet Upgrades Via	USB port	USB port		
Data Storage	50,000 pts	50,000 pts		
Battery Type	Rechargeable Li-ion	Rechargeable Li-ion		
Battery Life	17 hours or 4 200 measurements (with brightness set at 25%)	17 hours or 4 200 measurements (with brightness set at 25%)		
Battery Recharge Via	USB port	USB port		
Operating Temperature Range	15 - 28 °C (max 80% RH)	15 - 28 °C (max 80% RH)		
PHYSICAL CHARACTERISTICS				
Effective Aperture	19 mm Ø	19 mm Ø		
Absorber	H9	H9		
Mounting Holes (for Post)	2 x 8-32	2 x 8-32		
Dimensions	59.0W x 181.4L x 17.0D	59.0W x 181.4L x 17.0D		
Weight	210 g	210 g		
ORDERING INFORMATION				
Product Name	PRONTO-250	PRONTO-250-PLUS		
Product Number (without stand)	202917	203208		

Specifications are subject to change without notice // Compatible stand: P/N 200160

a. To get all the damage thresholds, see User Manual

b. At maximum power