



Laser marking



Laser engraving



Laser welding



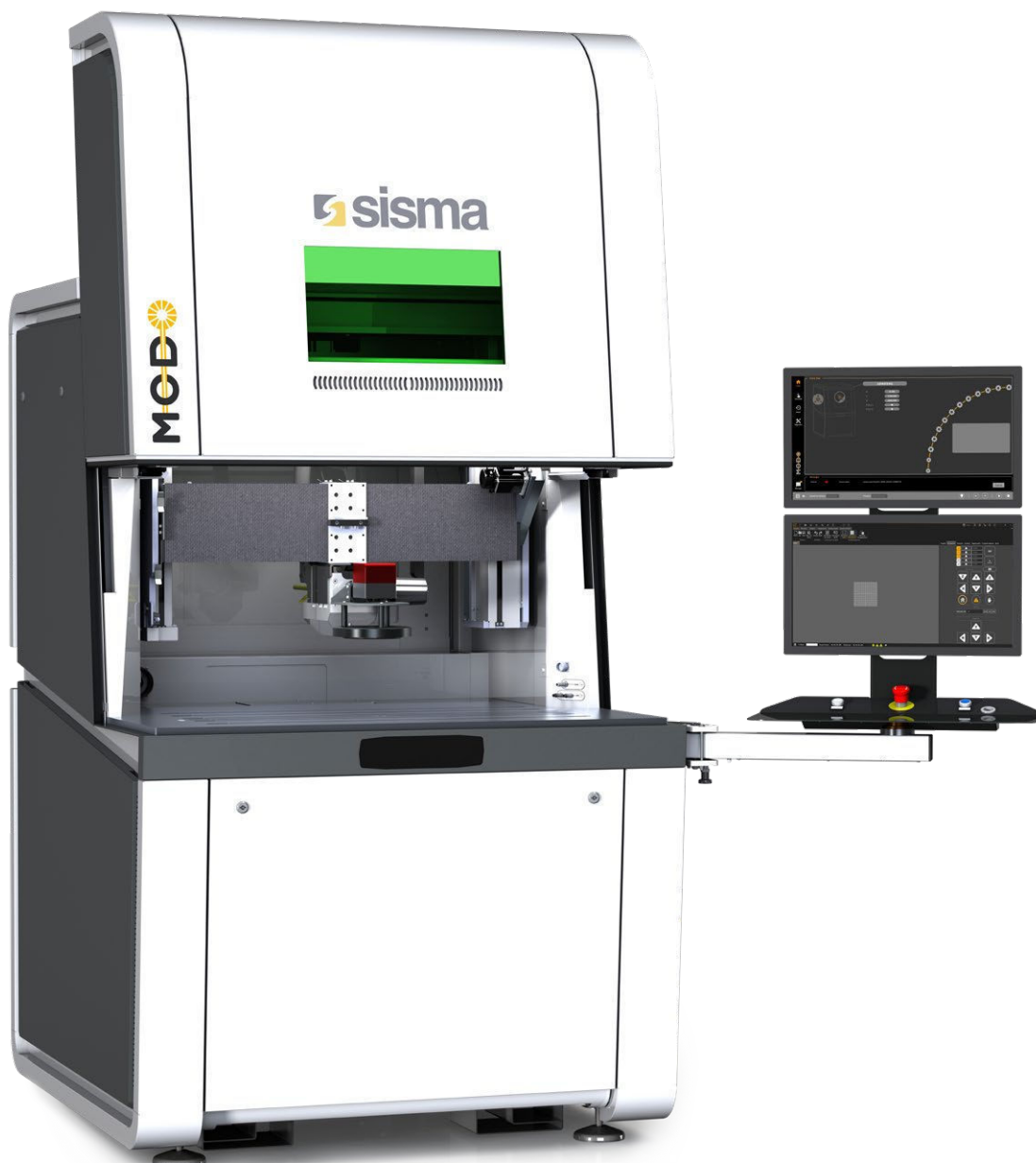
Universal systems for laser processes





Universal systems for laser processes

Find out how SISMA can revolutionize the way you produce: the MOD0 system offers an unprecedented range of configuration and is customizable according to specific needs.



Examples of configuration



MOD0Mark
taglia S – MOPA



MOD0Weld
taglia S – QCW EasyWeld



MOD0Mark
taglia M – MOPA with robot

SIZES

The best ratio between overall machine dimensions and working chamber dimensions.



Size S: 980 mm x 1460 mm x 2050 mm
Worktop: 690 x 770 mm



Size M: 1300 mm x 1460 mm x 2050 mm
Worktop: 1000 x 770 mm

AVAILABLE PROCESSES & SOURCES



MOD MARK



2D & 3D Marking – Remote Cutting – Engraving
CO₂ – MOPA – UV



MOD WELD

Remote Welding – Easy Welding
Fiber QCW – Fiber CW

AXES

MOD0 can be configured in the following variants:



cartesian axes with free choice
from 1 to 5 axes;



with industrial anthropomorphic robot.

ACCESS TO THE WORKING CHAMBER

Access to the working chamber on three sides with a maximum opening of 580 mm. The door is available:



manual version
locked during the process;



automatic electric with safety bumper.

SOFTWARE



MOD0Console
Simple and intuitive man-machine interface.



MOD0Inspector
Verification system and diagnostics of the machine.



SLC³ Powerful software for 2D and 3D design.

USER INTERFACE

Programming console with single or double monitor

Ergonomic solution for standing or semi-sitting positions that allows the creation of projects directly on the machine. You can add a second monitor to expand the programming area.

Touch Console

Compact touch-screen to manage the entire system in a simple way using ready-made projects or projects that require minimal precise calibrations.

Virtual Window

Screen that emulates the internal viewing window with elements of augmented reality that guarantee a high level of safety regardless of the power of the installed laser.



Rotary mandrel



Robot clamp management



Virtual Window system

APPLICATIONS

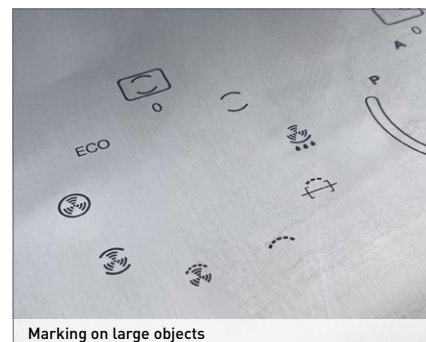
Marking



Blackening of medical instruments

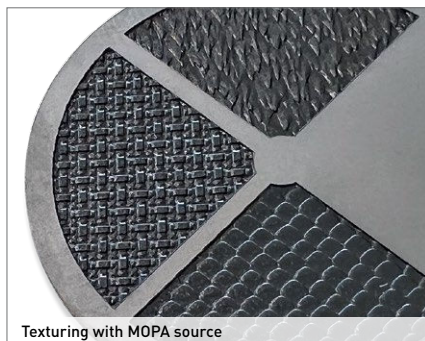


Marking on plastic with UV/CO₂ sources



Marking on large objects

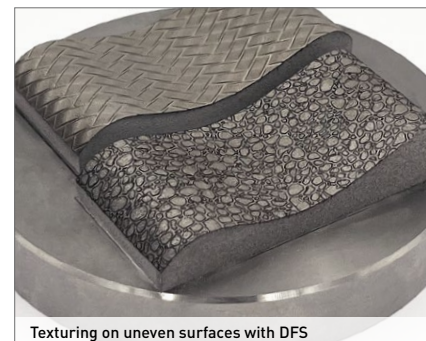
Engraving



Texturing with MOPA source



3D engraving on punch

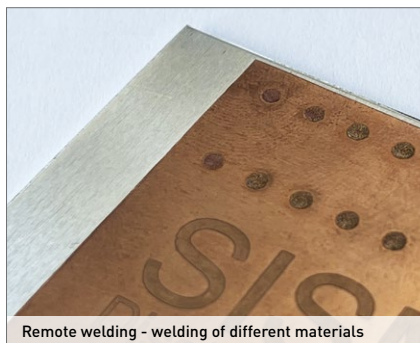


Texturing on uneven surfaces with DFS

Welding



Welding with mandrel



Remote welding - welding of different materials



Remote welding

The features, images, performances, weights and measures contained in the catalogue are completely indicative and approximate and may change without notice.

11-2023



SISMA S.p.A.
via dell'Industria, 1
36013 Piovone Rocchette (VI) Italy
tel. (+39) 0445 595511 - fax (+39) 0445 595595
info@sisma.com - www.sisma.com

COMPANY WITH
QUALITY SYSTEM
CERTIFIED BY DNV
ISO 9001